

CRE

CAMBRIDGE ROAD ESTATE



June 2022

BUILDING THE FUTURE TOGETHER

The regeneration programme at Cambridge Road Estate (CRE) is progressing with Phase 1 construction expected to begin in 2022.

A big thank you from the CRE Regeneration team for all your feedback on the plans and proposals which have helped to get us to this stage in the programme.

This newsletter shows how we have worked together to shape the future of the Estate and invites you to help shape the new community centre that will be delivered in Phase 1.

A NEW COMMUNITY CENTRE

We would now like to develop further the ideas and views that you have previously given to us about the new community centre. You can find out more about how to get involved in this newsletter.

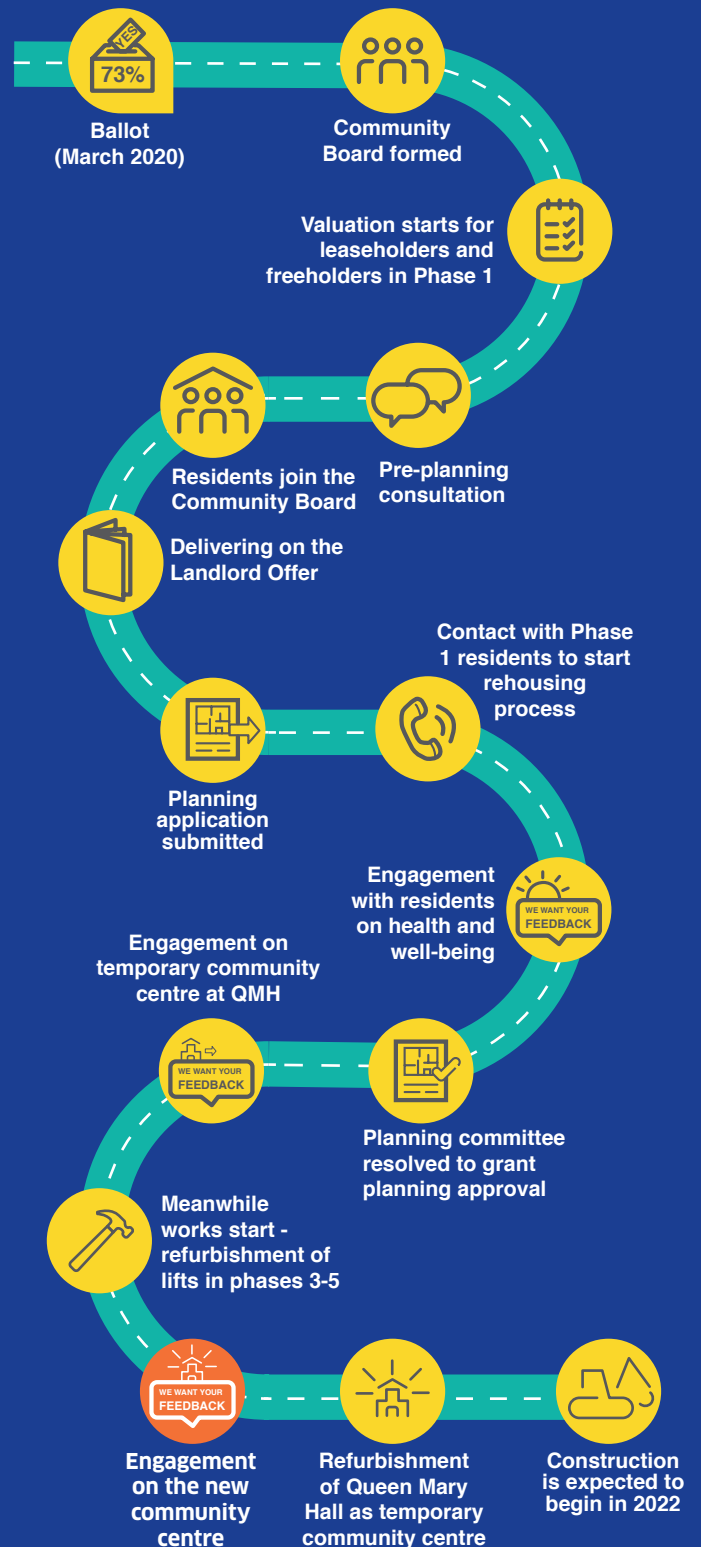


Artist's impression looking over Madingley

Difficulty reading this document?

If you would like this information in large print or the support of a translator to access it in another language, please contact the CRE Regeneration team on **FREEPHONE 0800 304 76 33** or email creregen@kingston.gov.uk

Our journey so far...



A NEW FLEXIBLE SPACE FOR THE COMMUNITY

WHAT YOU'VE ALREADY TOLD US

You want a community centre suitable for all ages, interests and activities, which could include your ideas for socialising, spaces for worship, group learning, keeping fit, childcare and a kitchen for on site catering.

Your feedback will help shape the different types of spaces the community centre will provide, to ensure it is a place the whole community can enjoy.

THE CURRENT PROPOSAL

The new community centre will be located between two residential blocks with entrances onto Cambridge Road and Madingley. The new community centre will benefit from entrances onto a large open, green space.

The approved Masterplan for the regeneration of the Cambridge Road Estate includes a new community centre that will be delivered in Phase 1. The new community centre will be:

- Larger than the existing centre at Piper Hall.
- Located at the front of the estate on Cambridge Road.
- Arranged over two floors with access to the outside space at Madingley.

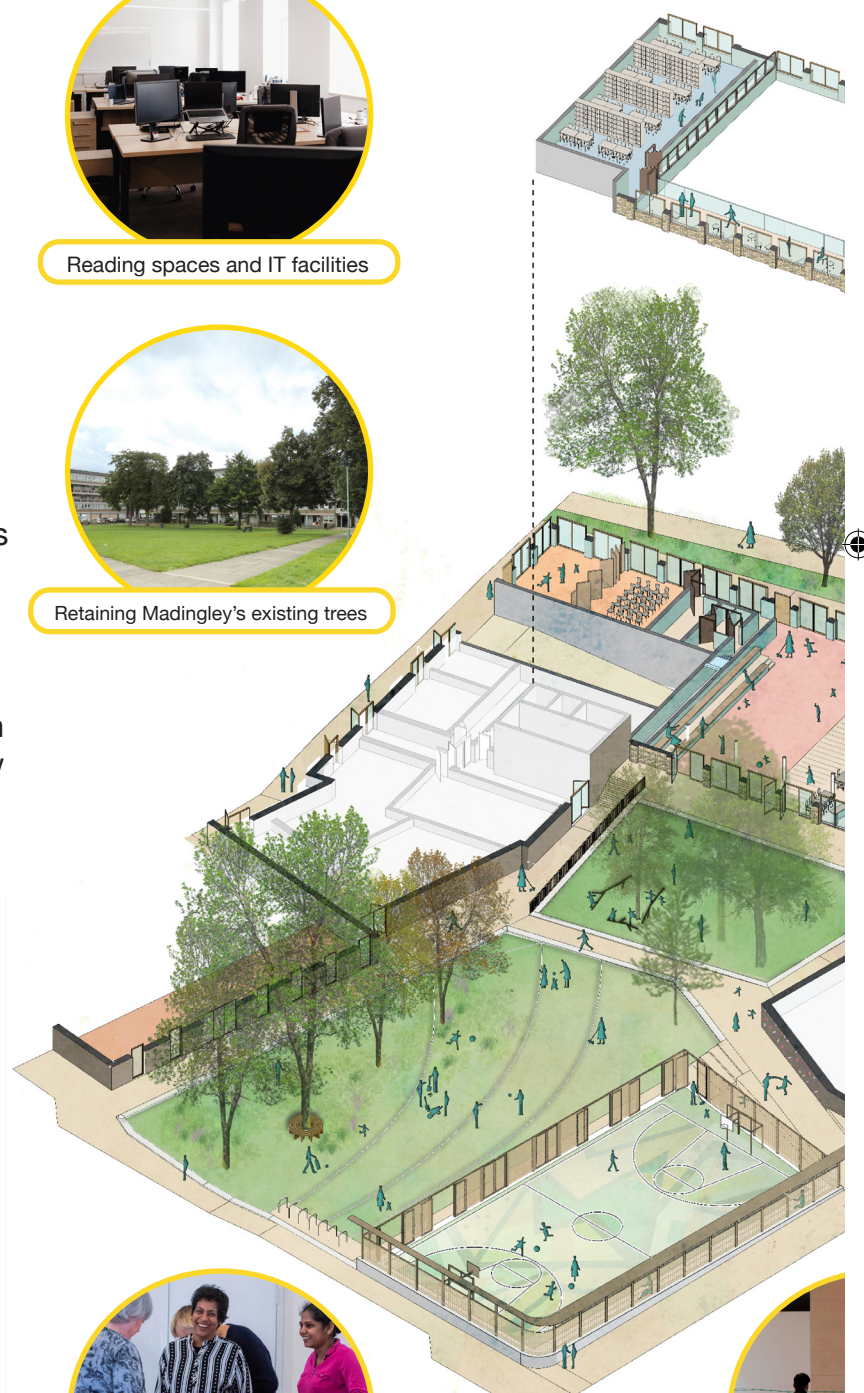
The image (right) shows how the new community centre could be arranged based on engagement with residents so far. Further engagement with you will help us to finalise the design.



Reading spaces and IT facilities



Retaining Madingley's existing trees



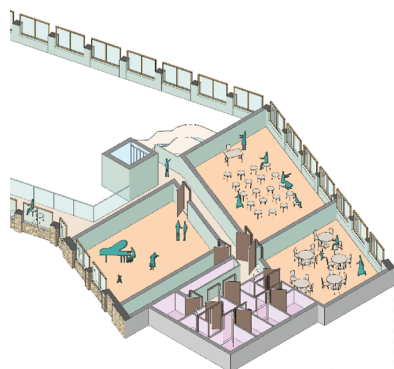
Space to meet and socialise



Large f



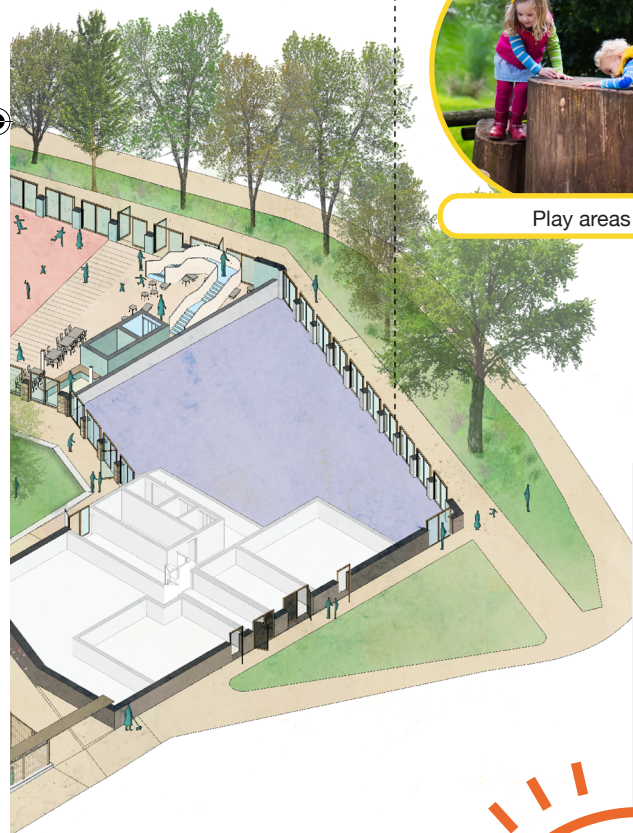
HELP US SHAPE THE COMMUNITY CENTRE



Kitchen for on site catering



Play areas



Large flexible spaces

GET INVOLVED...
WE WANT TO HEAR FROM YOUNG PEOPLE TOO!

We have an exciting opportunity to provide excellent facilities for the local community that's fit for the future. We want to hear from residents of the CRE and neighbours. We will be asking you about these key themes:

YOUR EXPERIENCE

What makes a good community space and do you use existing community spaces?

USES AND FACILITIES

What would you like to use the new community centre and outdoor space for?

LOOK AND FEEL

How can we make the spaces feel welcoming, accessible and inclusive?

Use the QR code below to fill out our community centre survey. You will also receive a printed version of the survey with this newsletter which you can return to us in the free post envelope.



1. Scan the QR code by hovering your phone camera over the code as if you are taking a photo.

2. Click on the link to the survey that pops up!

You can also fill out the survey here:
<http://kingstonletstalk.co.uk/new-cre-community-centre>
This engagement closes at 5pm on 29th July.

GIVE YOUR INPUT AT WORKSHOPS



We also want to talk to residents about your ideas for the new community centre. These workshops will take place in early July.

If you would like to come along to the workshops and talk to us in more detail, please email cregen@kingston.gov.uk or give us a call on 0800 304 76 33.

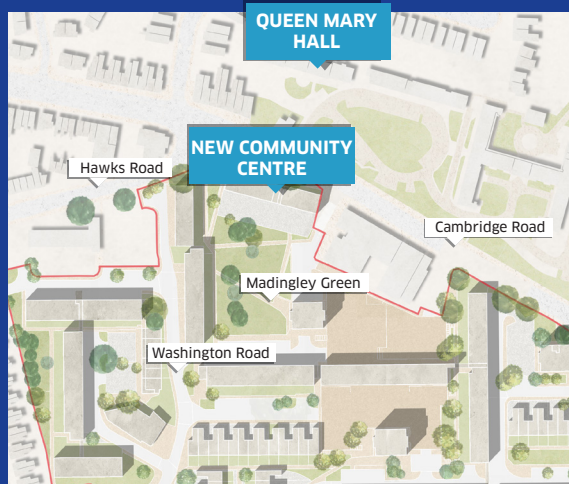


Artist's impression looking from Cambridge Road

A TEMPORARY COMMUNITY CENTRE AT QUEEN MARY HALL

Queen Mary Hall is being refurbished as part of the regeneration of the Cambridge Road Estate to make lasting improvements to the local community facility so that it can be used by residents in both the short and long term.

The location of the new community centre and the temporary community centre at Queen Mary Hall are shown below.



Difficulty reading this document?

If you would like this information in large print or the support of a translator to access it in another language, please contact the CRE Regeneration team on **FREEPHONE 0800 304 76 33** or email creregen@kingston.gov.uk

Contact Information

If you would like to talk to a member of the team about the proposed new community facilities, have any queries about the CRE regeneration or need help to fill in the survey, please don't hesitate to get in touch.

 **FREEPHONE: 0800 304 76 33**

 creregen@kingston.gov.uk

 www.cambridgeroadestate.com